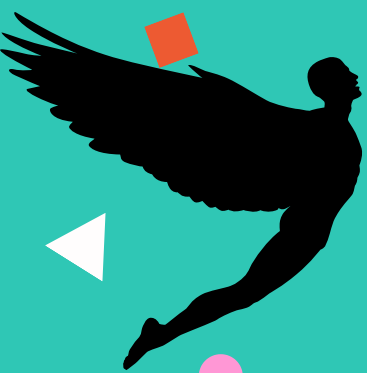


WHAT IS MEDICAL ANTHROPOLOGY?

EPISODE 2, SEASON 4

DR. MELISSA MALDONADO-SALCEDO



MEDICAL ETHICS AND CLINICAL CARE

TOWARDS JUSTICE

ETHICAL PRINCIPLES

- AUTONOMY
- NONMALEFICENCE
- BENEFICENCE
- JUSTICE
- FIDELITY
- CONFIDENTIALITY
- VERACITY
- ACCOUNTABILITY

CULTURAL COMPETENCY

- The recognition of how culture (i.e. a person's race, ethnicity, language, customs, and social norms) impacts the way someone walks through the world, including their perceptions about, and actions around, health..

STRUCTURAL COMPETENCY

Mental health issues like depression, psychosis, anxiety—and physical conditions like obesity and hypertension—are, in part, the outcomes of numerous decisions about health care access, food delivery systems, zoning laws, job growth, and loss, and even the very definition of health and illness.

Medical: Who has easier access to clinics, hospitalists and specialists? Who can afford prescriptions and services?

Sociological: How do we define "mental illness," and what types of symptoms do we consider problematic?

Political: What clinics (in what areas, serving which populations) are given funding? Who sets the minimum wage, and decides who gets grants and loans for higher education?

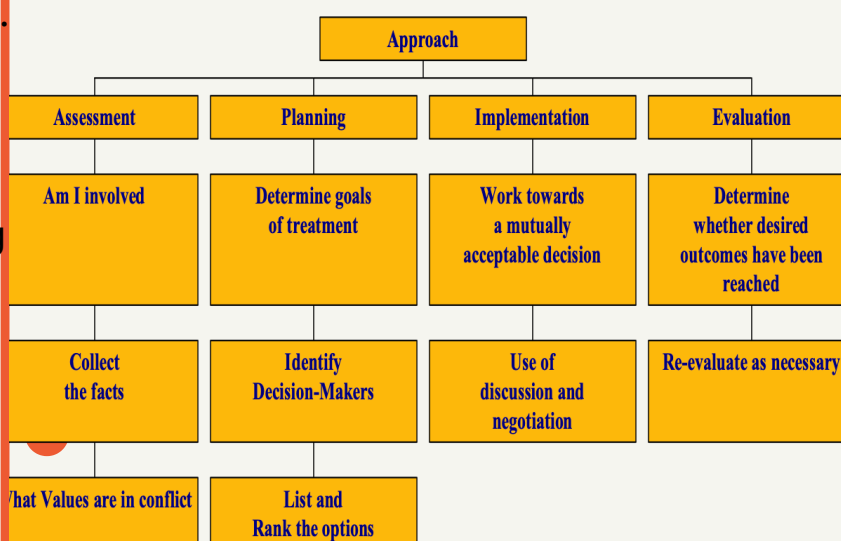
EDGAR ALLEN POE

AMERICAN STORYTELLERS AND POETS, SUFFERED AN EPISODIC BEHAVIOUR DISORDER PARTIALLY TRIGGERED BY ALCOHOL AND OPIATE USE. MUCH CONFUSION STILL EXISTS ABOUT THE LAST DAYS OF HIS TURBULENT LIFE AND THE CAUSE OF HIS DEATH AT AN EARLY AGE. DIFFERENT ETIOLOGIES HAVE BEEN PROPOSED TO EXPLAIN HIS MAIN MEDICAL PROBLEM, HOWEVER, COMPLEX PARTIAL SEIZURES TRIGGERED BY ALCOHOL, POORLY RECOGNIZED AT THE TIME WHEN POE LIVED, SEEMS TO BE ONE OF THE MOST ACCEPTABLE HYPOTHESIS, AMONG OTHERS DISCUSSED.

ETHICAL DECISION MAKING

- Describe the problem
- Gather the facts
- Clarify values
- Note reactions
- Identify ethical Principles
- Clarify legal rules
- Explore options and alternatives
- Decide on a recommendation
- Develop an action plan
- Evaluate the plan

Approach to Ethical Dilemma



GOLDEN RULE

NORMAL ROCKWELL

"The Golden Rule" mosaic by American artist Norman Rockwell was presented to the United Nations as a gift by Former First Lady of the USA, Nancy Reagan, in 1985 to mark the 40th anniversary of the founding of the UN. The Mosaic depicts people of different nationalities & religions standing together with the words "Do unto others as you would have them do unto you" - a call for religious tolerance and mutual understanding that underpins all faiths.



Dr. Rafael Campo on the relationship between Poetry and Medicine.

[Learn more](#)